



Manufacturers of
Pharma & Food Machineries



Pharmaceuticals ◀

Nutraceuticals ◀

Cosmetics ◀

Chemicals ◀

Foods ◀

COMPANY INTRODUCTION

Our Vision

To be the most trusted manufacturer of Pharmaceutical Machineries.

Our Mission

The Skyline Pharmatech designs and manufactures Pharmaceutical and Food Processing Machineries and provides exceptional service and support. To achieve higher levels of customer satisfaction by providing quality products through innovation, teamwork and commitment to meet the needs of our customers in anticipating market opportunities. We believe in an environment of growth, change and continuous improvement that empowers the employees.

About us

The Skyline Pharmatech was established in the year 2019 with the objective of manufacturing and marketing machineries for the pharmaceutical, food, beverage, cosmetic and chemical industry. It was promoted by a group of technically qualified and experienced persons from traditional pharma equipment manufacturing firms. The goal of the associates was to pool their technical and financial resources to provide an alternative to the then established brands of pharmaceutical machinery manufacturers. Due to traditionally acquired skills of fabrication, hard work, good workmanship, associate companies, a wide range of products and fast deliveries the company is geared up to soon establish its brand name in the turn-key projects and machinery manufacturing field.

It has now grown into a full-fledged manufacturing set-up located in the metropolis of Mumbai. Skyline today has complete infrastructure to produce equipment that are energy-efficient, reliable with high performance levels along with aesthetics and ergonomics design, at the same time being compliant, to cGMP (current good manufacturing practice) and various regulatory requirements. With advanced and innovative features designed and customised to the need of user.

Better engineering leading to cost savings, scheduled deliveries, reduced utility requirements, and customer satisfaction are our achievement and we are continuously striving further towards our vision & mission.

Core Values

Quality : We believe that quality is a primary raw material in every machine and has to be added at each stage of manufacturing. What we do, we do well.

Economical : Our machines are comparatively economical due to cost savings through adoption of advance engineering.

Innovation: We are constantly seeking new and better ways to create value in every area of our business.

Commitment : We are committed to the welfare and development of our people, and our obligations to our customers.

Teamwork : We work together, across boundaries, to meet the needs of our customers and to help our Company win.

Technology

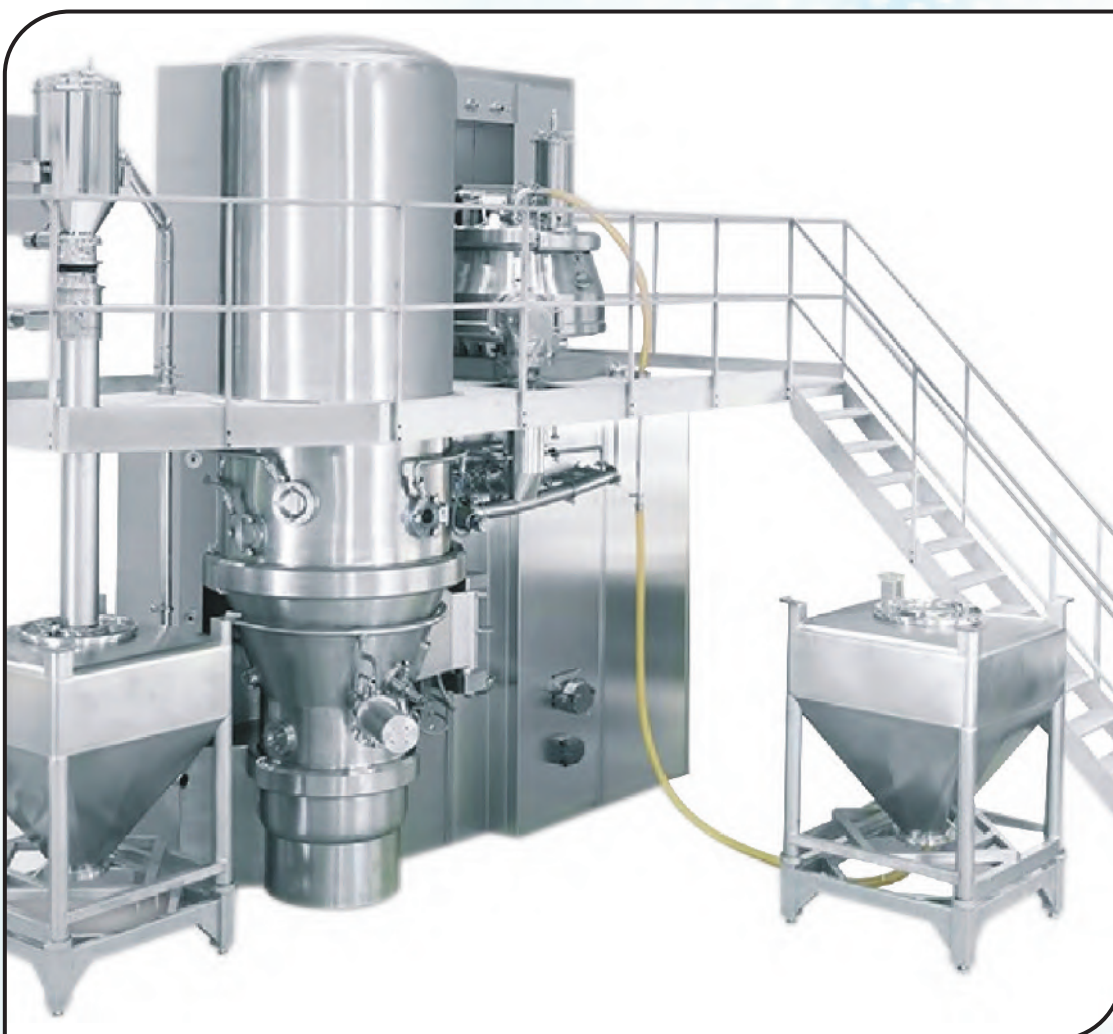
Technology has been the backbone of the company's progress. The latest techniques are used at all stages of product design and development. The company's team for product development activities focuses on future trends and needs, making Skyline's equipment more efficient, operational and user-friendly. Our constant focus on research has led to the production of a variety of high quality and innovative equipment and systems.

BASIC INFORMATION

| | |
|-----------------------|---|
| Name of Company | SKYLINE PHARMATECH |
| Nature of Business | • Manufacturer • Exporter • Supplier |
| Industry | Engineering |
| Registered Address | 131, Mayechi Sawali, At & Post-Khanivade, Taluka-Vasai, District- Palghar, Maharashtra, India - 401305. |
| Year of Establishment | 2019 |
| Ownership Type | Partnership Firm |
| Name of Directors | • Mr. Hitesh Tare • Mr. Sujit Sambare • Mr. Ajay Tejam |

INFRASTRUCTURE

| | |
|------------------|-------------------|
| Location Type | Vasai, Palghar |
| Size of Premises | 3,000 square feet |



SKYLINE RAPID MIXER GRANULATOR



The Skyline Rapid Mixer Granulator is an ideal mixer is widely used in pharmaceutical, chemicals and food industry for wet granulation, dry mixing, wax granulation along with aqueous and solvent granulation. The Skyline RMG is so design to achieve efficient, safe and hygienic mixing by reducing processing time, homogeneous mixing, even distribution of binder, wetting, nucleation and granule size growth with sampling provision for in process analysis and proven safety during processing, compliant to cGMP norms.

"Z" Type Impeller Blade

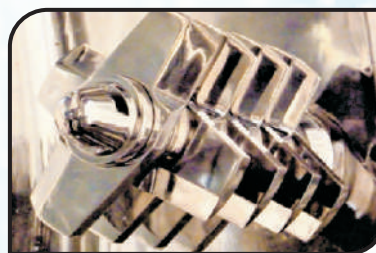


- Strategic "Z" shaped impeller scraps and lifts the material upward which help in faster granulation.
- "Z" shaped blade imparts less force on drive assly. Hence minimizes load on motor.

Salient Features:

- Homogeneous binder distribution.
- Specially designed impeller and chopper blades.
- Air purging sealing system for granulator shaft.
- All internal contact parts are under precise control of process & automation.
- Radial mounting of high-speed chopper to assist blending of powder & to break the lumps produced during operation, which makes granulation faster.
- Available with Auto Control panel and PLC/HMI system as per requirement.
- Optional features of Jacketed models, Vacuum / Gravity Charging, Mechanical Seals, Binder spraying systems, CIP / WIP systems.
- Hydraulically operated Lid lifting option.

Knife Edge Chopper Blade Design



- Knife edge chopper design.
- Improved chopping time.
- Easy dismantling of assembly for cleaning.
- Specially designed chopper blades driven at high speed gives fast and even granulation.

Production Model

| Model | SKYRMG -60 | SKYRMG -100 | SKYRMG -150 | SKYRMG -200 | SKYRMG -250 | SKYRMG -400 | SKYRMG -600 | SKYRMG -800 | SKYRMG -1000 | SKYRMG -1200 |
|-----------------------------------|------------|-------------|-------------|-------------|-------------|-------------|-------------|-------------|--------------|--------------|
| Gross capacity (In liters) | 60 | 100 | 150 | 200 | 250 | 400 | 600 | 800 | 1000 | 1200 |
| Working capacity (in liters) | 48 | 80 | 120 | 160 | 200 | 320 | 480 | 640 | 800 | 960 |
| Working capacity (in kgs) @0.5 BD | 15-20 | 25-35 | 40-55 | 55-80 | 65-90 | 100-140 | 150-215 | 200-280 | 250-350 | 250-350 |
| Impeller Motor HP / kW | 5/3.7 | 10 / 7.5 | 15/11.2 | 20/15 | 20/15 | 40/30 | 50/37.5 | 60/45 | 60/45 | 75/56 |
| Chopper motor-HP / kW | 2 / 1.5 | 3/2.2 | 5/3.7 | 5/3.7 | 5/3.7 | 7.5/5.6 | 7.5/5.6 | 7.5/10 | 10/7.5 | 10/7.5 |

LAB SCALE RMG



Lab Models

| Model | SKYRMG-1 | SKYRMG-2 | SKYRMG-3 | SKYRMG-5 | SKYRMG-10 |
|------------------------------|------------|-----------|------------|----------|-----------|
| Gross capacity (In liters) | 1 | 2 | 3 | 5 | 10 |
| Working capacity (in liters) | 0.8 | 1.6 | 2.4 | 4 | 8 |
| Working capacity @0.5 BD | 0.15-0.4kg | 0.3-0.8kg | 0.45-1.2kg | 0.75-2kg | 1.5-4kg |
| Impeller Motor HP / kW | 0.5/0.37 | 1/0.75 | 1/0.75 | 2/1.5 | 3/2.25 |
| Chopper motor-HP /kW | 0.5/0.37 | 0.5/0.37 | 0.5/0.37 | 0.5/0.37 | 1/0.75 |

Customised sizes available on request.

SKYLINE FLUID BED DRYER

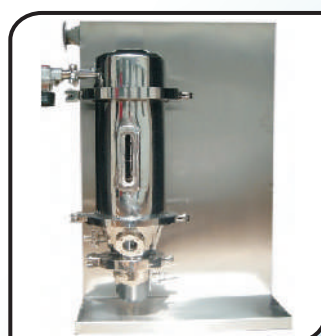


The Skyline Fluid Bed Dryers (FBD) are used extensively in the pharmaceutical industries to reduce moisture content of pharmaceutical powder and granules. The equipment shall operate under dust free environment and conditions as per the cGMP requirements. It works on the air suspension technology. The Skyline FBD has fully featured design to meet internationally made FBD's. The unique design resulting in lesser drying time, giving a better shelf life to the product. The finger bag assembly is with quick release clamps for easy removal and fixing of the finger bag. The air handling unit has been designed keeping in mind, tool less construction for ease in cleaning / replacing the filter assembly. The machine has improved aesthetic and ergonomic design resulting in better look and ease of operation.

Salient Features:

- Tri level filtration using: 10micron for pre air filtration, 5micron for secondary air filtration and 0.3micron HEPA for final air filtration.
- Proportional control temperature controller.
- Customized inlet / exhaust nozzle location to suit customer requirements.
- Control panel — PLC operated or standard control panel. (optional)
- Specially design explosion sheet to make machine explosion proof.
- Intrinsically safe system of earthling with low voltage.
- Inflatable silicon seals for sealing.
- Single pneumatic cylinder for the bag movement and bag shaking improves operation time.
- SS 304 ducting for air exhaust.
- The solid flow monitor to ensure suspension of powder flow to environment.
- High static high efficiency blower installed, Improves fluidization, resulting in faster drying.
- Strategically mounted observation windows for better viewing of drying operation.

LAB SCALE FBD



Production Model

| MODEL | SKYFBD 30 | SKYFBD 60 | SKYFBD 120 | SKYFBD 200 | SKYFBD 250 | SKYFBD 300 | SKYFBD 500 |
|--|-----------|-----------|------------|------------|------------|------------|------------|
| Container Gross Volume (Ltr.) | 100 | 200 | 400 | 670 | 800 | 1000 | 1650 |
| Batch Capacity — Kgs. | 30 | 60 | 120 | 200 | 250 | 300 | 500 |
| Drying Temp in° C | | | | 50-85 | | | |
| Electric Load in kW | 18 | 36 | 54 | ---- | ---- | ---- | ---- |
| Steam supply @ 3 kg/cm ² in Kcal/hr | 12925 | 25850 | 51700 | 82720 | 103400 | 129250 | 196460 |
| Blower Capacity M ³ /hr | 2000 | 2500 | 3000 | 6000 | 6000 | 12500 | 16500 |
| Elec. Motor HP | 15 | 15 | 20 | 30 | 25 | 30 | 40 |

Customized sizes available on request.

SKYLINE MILL -WET/DRY



The Skyline Mill is widely used for sizing, high speed shredding, and grinding of powders, granules, tablets and a wide range of wet and dry materials. As compared to the four common principles of size reduction i.e. Cutting, attrition, impact and pressure, which often do not produce controlled size reduction, this machine utilises the principle of centrifugal shearing force. It finds wide applications in the pharmaceutical and nutraceutical industry for shredding of rejected tablets, dry milling, wet milling, shredding of oversized material (de lumping), etc. The Skymill has innovative design & geometry of the conical screen & impeller for its superior performance.

Salient features:

- Compact size online model also available.
- Safety standards with no outside cables.
- Vacuum loading option.
- Bin charging loading system option.
- Different profile of blade and sieve available.
- Dust free closed system for charging and discharging of powders or granules.
- Minimum maintenance.
- Easy to clean.
- Top and Bottom entry drive. (Optional)

| MODEL | SKYMILL-1 | SKYMILL-2 | SKYMILL-3 | SKYMILL-5 |
|------------------|-------------------|-----------------|-----------------------|----------------------|
| Output (kgs/hrs) | 10– 60 | 100 – 350 | 100 – 500 | 100 – 750 |
| Drive | 0.5 HP @ 1440 RPM | 2 HP @ 1440 RPM | 3 HP @1440 / 2880 RPM | 5 HP @1440/ 2880 RPM |

SKYLINE MULTIMILL



The Skyline Multimill operate on the principle of variable forces wing hammer blades, having both knife and impact edges, rotating with a carefully selected screen to control sizing. It is used for high speed Granulating, Pulverising, Mixing, Shredding and Chopping of a wide range of wet and dry materials. It finds application in pharmaceuticals, chemicals, cosmetics, colors, dyestuff, food products, pesticides, fertilizers, spices, diet regents, insecticides, plastic and resin industries.

Optional Features:

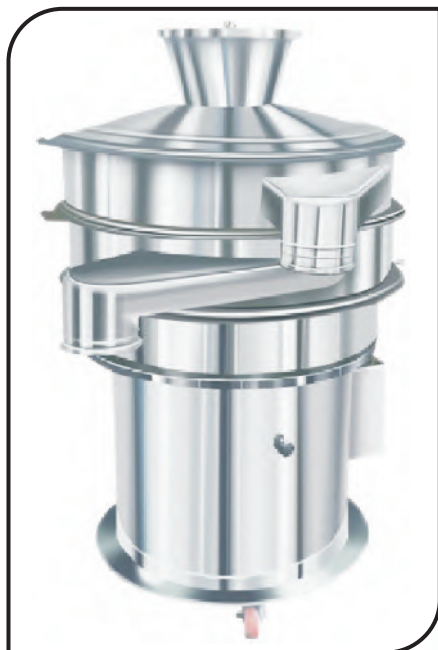
- Belt less design.
- FLP electricals.
- VFD speed controls.

| MODEL | | SKYMM-1 | SKYMM-3 | SKYMM-5 |
|------------------------------|---|-----------|---|------------|
| Output- kg / hour | | 50 to 200 | 75 to 300 | 100 to 400 |
| No of Beater | | 8 | 8 | 8 |
| Electric Power HP/kW | | 1 / 0.75 | 3 / 1.5 | 5 / 3.75 |
| AVAILABLE SCREEN SIZES | PERFORATED SS SCREEN (HOLE DIA IN MM) | a | \$0.5,1.0,1.5 | |
| | | b | 2,3,4,5,6 | |
| | | c | 7, 8, 10, 15, 20, 25 | |
| | WIRE MESH SEIVES | a | #4,#6,#8,#10,#12,#14,#16,#20,#24, #30,#40,#50,#60, | |
| | | b | #80,#100. | |
| | | | | |



Customized sizes available on request.

SKYLINE VIBRO-SIFTER



ANTISTATIC MESH

The Skyline Vibro Sifter cGMP is based on the 'Gyro' principle. It is used for 'Dust-free' screening, sieving, grading for solid-liquid or solid to solid separation of the Pharmaceutical, Nutraceutical, Food, Chemical, Cosmetic and other allied industries. The vibro shifter is specially designed to meet required centrifugal force for efficient operation also, for convenient usage & maintenance.

Optional Features:

- Inline loading / Milling process.
- Vacuum transfer integration.
- Single, double or triple deck sifting system.
- FLP / Non-FLP electricals.
- Model Mesh Size: 12" 20" 30" 36" 48".

| MODEL | SKYVS-12 | SKYVS-24 | SKYVS-30 | SKYVS-36 | SKYVS-48 |
|-------------------------|-------------|------------|------------|------------|------------|
| Output- kg / hour | 5 to 40 | 50 to 200 | 75 to 300 | 100 to 400 | 125 to 500 |
| Screen Diameter- mm. | 300 | 600 | 750 | 915 | 1220 |
| Charging height- mm. | 1190 | 1190 | 1190 | 1190 | 1330 |
| Discharging height- mm. | 750 | 750 | 750 | 750 | 700 |
| Electric Power hp/kW | 0.25 / 0.18 | 0.5 / 0.37 | 0.5 / 0.37 | 0.5 / 0.37 | 1 / 0.75 |

SKYLINE PASTE KETTLE



The purpose of Paste Kettle is to mix liquid in liquid and soluble solids in liquid using top entry anchor agitator. The Skyline Paste Kettle has unique design to get optimum mixing efficiency so as to ensure a homogeneous mixing. The special anchor in the vessel has been designed to create vortex inside the solution which enhances the desired solubility of pharmaceutical binder solute into the various solvents.

Features:

- Unique design to get optimum mixing efficiency.
- Special anchor design for homogenous mixing.
- Anchor agitator - fixed type / with hydraulic lifting.
- Controlled temperature exposure with special jacketed bowl.
- Jacket - steam / electrical heater type.
- Manually / Motorised tilting arrangement.
- Direct transfer of binder solution to granulation processing equipment. (optional).
- Easy cleaning & maintenance.
- Available capacity: 5L to 500L.
- Custom-made capacity is also available on request.

SKYLINE BLENDERS

The blenders are very important equipment in pharmaceutical industry, as a medicine is manufactured by mixing number of drugs and chemicals. This mixing is required to be undertaken in either dry or wet state depending upon the chemical composition and the reactions allowed.

The blender offers some common features as listed below.

- Appropriate for dry mixing of products in powdered form.
- Dust free closed system in bin charging.
- Material handling through bin charging or vacuum charging.
- Slow speed blender with gentle blending of dry granules and powder.
- Built-in Butterfly valve at the bottom for discharge.
- Flame proof electricals can be provided.
- Available from 5L. to 4KL. capacity.
- PLC and HMI control system. (Optional)

The Skyline provides various types of blenders as per user requirement and process needs. Types and its key features are given as follows.



1) SKYLINE OCTAGONAL BLENDER

Key Features:

- Less energy consumption compared to other blenders.
- Rectangular opening lid with removable baffle mounted inside.
- Dynamic and statically balanced machine design.
- Fixed baffles for lump breaking also available.

2) SKYLINE CONTA BLENDER

Key Features:

- Flexibility of accepting variable bin sizes providing wide range of batch volumes.
- Right position of bin after completion of every mixing cycle - achieved with the help of proximity switch and VFD and brake motor.



3) SKY "V" BLENDER

Key Features:

- The "V" shape gives sufficient movement that results in optimum quality.
- Fixed baffles for lump breaking also available. (Optional)

4) DOUBLE CONE BLENDER

Key Features:

- The cone is statically balanced which protects the gear box and motor from any excessive load.
- Depending upon the characteristic of the product, paddle type baffles can be provided on the shaft for better mixing, uniform blending and de-agglomeration.
- Conical shape and elongated plane at both end enable uniform mixing and easy discharge.



SKYLINE TRAY DRYER



The Skyline Tray Dryers is useful in chemical, dyestuffs, and pharmaceutical & food industries. A tray dryer is an enclosed, insulated housing in which trays are placed on angled rack. Material to be dried is placed on the trays. Heating media is hot air, and heat transfer is direct from hot gases or electric heaters to wet raw material with help of specially design air circulation fan arrangement to maintain the constant temperature in the dryer and ensures uniform circulation of hot air this will enhance the drying of raw material & reduces the drying time.

Technical Specification

| Model | Over all dimension (W X D X H) mm. | Trays Qty. | Fan Nos. | Motor HP | Heater kW | Trolleys Nos. |
|-----------|------------------------------------|------------|----------|----------|-----------|---------------|
| SKYTD- 12 | 1950 X 1050 X 1150 | 12 | 1 | 0.5 HP | 6 kW | 1 |
| SKYTD-24 | 2150 X 1050 X 1500 | 24 | 1 | 1 HP | 9 kW | 1 |
| SKYTD- 48 | 2150 X 1050 X 2150 | 48 | 1 | 1 HP | 18 kW | 1 |
| SKYTD-96 | 3200 X 990 X 1880 | 96 | 2 | 1 HP | 24 kW | 2 |

SKYLINE COATING PAN



The Skyline Coating Pan is used to form an aqueous or organic film around any kind of pellets and tablets or micro granules. This Pan is also widely used to sugar-coat tablets. A coating pan is an essential requirement in pharmaceutical applications.

Common Features:

- The standard pan is elliptical in shape, mounted at 30° angle. Pans in other geometrical shapes and mounting angles, as per requirement can be given.
- RPM of the pan is variable. Hot air blower, thermostat controlled to deliver required quantity of air at selected temperatures between 40°C to 80°C is provided.
- FLP / Non- FLP electricals. (Optional)
- Tilting mechanism to adjust angle of pan.
- Polishing pan with canvas lining with quick and easy mounting on to drive hub.

Technical Specification

| Model | SKYCP-24" | SKYCP-36" | SKYCP-48" | SKYCP-60" | SKYCP-72" |
|-------------------------|-----------|-----------|-----------|-----------|-----------|
| Loading capacity in kg. | 25 | 60-80 | 100-120 | 150-200 | 250-250 |
| Drive Motor HP | 0.5 | 1 | 2 | 5 | 7.5 |
| Hot air blower motor HP | 0.25 | 0.5 | 1 | 1 | 1 |
| Blower kW CFM | 100 | 200 | 500 | 750 | 750 |
| Heater kW | 1.5 kW | 3 kW | 4.5 kW | 6 kW | 6 kW |

SKYLINE OINTMENT/CREAM MANUFACTURING FACILITY

The Skyline Ointment Processing unit is used for production of pharmaceuticals emulsions, suspension, ointment creams & premium cosmetics, requires highest standards of mixer, the control system and the recipe management. Validatable production and cleaning process unit with FDA-approved materials. Varying products and product qualities for the international market need flexible and universally applicable process units.



OINTMENT & CREAM PROCESSING SYSTEMS

Applications

- Ointments, Cream, Lotion, Gel.
- Sterile eye drop.
- Inhalation liquid.
- Toothpaste.
- Hair care products.
- Mascara.
- Mayonnaise.
- Body care products.
- Colour pastes.
- Cosmetic creams.

Standard Version

- Hemispherical or conical vessel with slow speed agitator with inline or bottom entry HSE for production scale unit.
- Top entry homogenizer for pilot unit.
- Wax phase vessel.
- Water phase vessel.
- Internal and external homogenization.
- Heating and cooling system with temperature control and safety equipment.
- Vacuum system.
- Working platform above 300 kg plant.
- Hydraulic lid lifting system.
- Control panel.

Optional

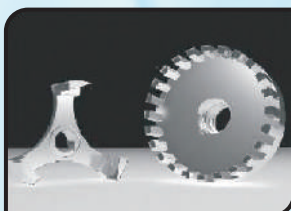
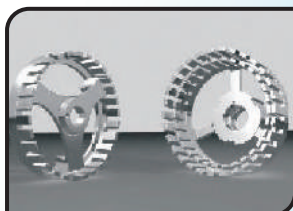
- User-friendly interface / with PLC.
- Choice of automation package.
- Load cell and dosing unit.
- Available Capacities from 5L. to 2KL.



COWL DISC IMPELLER



PROPELLER AGITATOR



HOMOGENIZER ROTORS



ANCHOR AGITATOR WITH PTFE SCRAPERS



INLINE HOMOGENIZER

SKYLINE LIQUID SYRUP / ORAL MANUFACTURING PLANT



Liquid Manufacturing Plant consists: -

- Sugar Melting Vessel.
- Syrup Manufacturing Vessel.
- Pre-filtration unit.
- Filtration unit.
- Storage Vessel.
- Control Panel.
- Product Piping.
- Working Platform.

The Skyline Liquid Manufacturing Plants are ideal tools for the pharmaceutical industry to produce oral liquids. It is specially designed to take care of two critical factors which directly affect the quality of the liquids.

Operation:

- This system consists of a closed-circuit manufacturing facility from feeding of Sugar / Water Phase to loading the liquid filling machine.
- The Sugar and Water are load with vacuum system or by mechanical system or manually.
- The Sugar syrup vessel is supplied with high speed stirrer & electrical heating (In small model) / steam heating facility (In bigger size model).
- The sugar syrup is prepared at required temperature & is transferred to manufacturing vessel by vacuum or by transfer pump.
- The product during emulsion formation is recalculated through In-Line Homogenizer or Liquid Transfer Pump. (Optional Facility)
- The pump also discharges the product in the storage vessel.
- The storage vessel is then taken to the filling area (if it is small capacity) and is connected to again liquid transfer pump. Or storage vessel remains fixed (in bigger size) & pump transfer the liquids in the float tank which is connected with filling machine.
- The entire plant can be operated by centralized operating panel by one operator.



Salient Features:

- Minimum manual handling of liquid.
- Effective cleanness during manufacturing.
- Capacity ranges from 5L to 10KL.
- Provides the benefits of the effective manpower utilization.
- All material transfers are done by vacuum or by transfer pumps.
- All the vessels are cGMP (paint free construction) .
- The gaskets used are of silicon (food grade).
- All contact parts are of SS 316 quality material (SS 304 provided on demand) & finished to class 4B (Mirror) finish and are crevice free.
- The entry of stirrer & high-speed emulsifier is from bottom. In-line emulsifier (as per customer choice) provided on demand.
- All vessels are suitable for internal pressure of 1 Kg/ Sq.cm. and hence can be sterilized.
- All pipes, pipe fittings and valves are of SS 304 / SS 316 (as per customer requirement) seamless quality, internally electro polished, with tri-clover ended joints.

SKYLINE ZERO HOLD UP FILTER PRESS



The Skyline range of Filter Presses are used for wide range of applications by several industries like Pharma, bulk drugs, distilleries, beverages and other industries.

Operation:

The unfiltered liquid is fed into the filter under positive pressure, where liquid travels in downwards direction and finds its way through opening on sides of the filter plates.

As the liquid pressure increases, the filter media holds the foreign particles and allows only clear filtrate to pass through the central channel formed by interlocking pressure cups to the outlet. Filtration is continued until the cake holding capacity of the unit is reached or until the filtrate rate becomes too slow owing to cake resistance.

Features:

- Zero hold up of filtrate without scavenging operation.
- Superior clean filter tank processing.
- Fast and easy removal of filter plate & cartridges due to top dome construction.
- Hence easy removal of cake.
- Higher working pressure possible.
- Uniform filter aids and cake distribution.

Filter Press Technical Specification

The values of "Flow-Rates" mentioned in technical specifications have been estimated for the following

| Types | Diameter of Plate | No. of plates | Filtering area | Cake capacity | Output lit./hr. |
|------------|-------------------|---------------|-----------------------|---------------|-----------------|
| SKYFP 86 | 8" | 6 | 0.1886 m ² | 4.34 liters | 400 |
| SKYFP 88 | 8" | 8 | 0.2260 m ² | 5.79 liters | 500 |
| SKYFP 148 | 14" | 8 | 0.6130 m ² | 27.78 liters | 1000 |
| SKYFP 1410 | 14" | 10 | 0.7960 m ² | 34.72 liters | 1200 |
| SKYFP 1812 | 18" | 12" | 1.745 m ² | 78.01 liters | 4000 |
| SKYFP 1815 | 18" | 15 | 2.169 m ² | 40.50 liters | 5000 |
| SKYFP 1823 | 18" | 23 | 3.338 m ² | 63.49 liters | 7000 |
| SKYFP 2410 | 24" | 10 | 2.53 m ² | 142.56 liters | 9000 |
| SKYFP 2418 | 24" | 18 | 4.37 m ² | 113.12 liters | 16,200 |
| SKYFP 2413 | 24" | 13 | 3.22 m ² | 185.33 liters | 11,700 |
| SKYFP 2424 | 24" | 24 | 5.75 m ² | 150.81 liters | 21,000 |

Operating Parameters:

Fluid: Water.

Insoluble: Carbon.

Filter Media: Non-woven polypropylene cloth of 418 grades.

Carbon loading: 5 Kg /m² filtration area.

ADDITIONAL EQUIPMENTS FOR LIQUID SECTION



PRESSURE VESSEL



STIRRERS



STORAGE & MIXING VESSELS

SKYLINE VACUUM TRANSFER SYSTEM



Vacuum Transfer is the process of moving bulk dry materials, such as powders, from place to place within a factory using vacuum pressure. The material is transferred in a network of tubing from the source to the predefined destination. The skyline's Vacuum Transfer System convey product based on a timed interval to the vacuum receiver. At the end of the timed sequence the discharge valve opens, and the material conveyed can discharge in to the process.

The skyline provides different types of vacuum transfer system as per client's requirement are listed below:

- Mobile Vacuum Transfer System.
- To refill Volumetric and gravimetric feeders.
- Vacuum Transfer system for loading tablet process.
- Vacuum transfer system for blender charging.
- Capacity ranges from 100-300 Kg / Hr.

SKYLINE MATERIAL HANDLING EQUIPMENT



IPC LIFTING AND POSITIONING DEVICE



FBD TIPPER



PALLET TRUCK



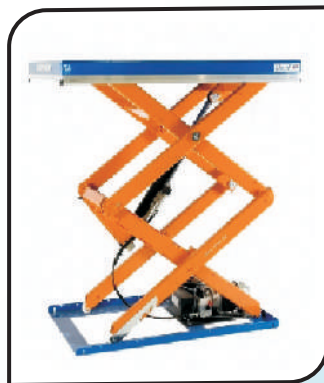
PACKING CONVEYOR



SLAT CONVEYOR



SLAT CHAIN



SCISSOR LIFTER



TURN TABLE



SLAT CHAIN (DELIN)

SKYLINE CLEAN IN PLACE (CIP) SYSTEM



The Skyline Clean In Place system is engineered to provide a portable solution for in place cleaning of the pharmaceutical and biopharmaceutical plants. The CIP system defined to allow cleaning of process equipment without dismantling, or manual cleaning with minimal operator involvement. It is used to clean the internal surfaces of process equipment, process lines and tanks. A CIP system can use a spray washing method or a fill and drain flush cleaning method. Chemical cleaning solutions can be used with higher concentrations of acids, detergents, and sanitizers and at higher temperatures compared to manual cleaning methods.

Features:

- Proper CIP design with regulated time, flow & temperature to thoroughly remove residue.
- Custom designed to suit individual plant & application requirements along with its control systems.
- Multiple options available for Heating, Mobility & Material of construction.

SKYLINE INFRARED RAY DRYER



Cupboard Dryer

The Skyline Infrared ray dryer is used for speedy drying of washed equipment by just exposing under dryers. IR rays are not harmful, safe to human body. No increase in temperature of the surrounding atmosphere, since rays give heating effect only to the object on which it falls. These rays do not require air as a media, still blower is provided to cool down heated items.

IR elements are ceramic coated thus ensure no particle shedding or black particle generation, which may contaminate washed equipment. The IR Dryer reduces the microbial counts. It is more effective for drying stainless steel equipment because stainless steel surface is reflective surface.

As per application following models are available:

- Umbrella: for FBD bowls & Spare parts.
- Insertion: for Blender Bin, Storage/Mixing Vessel & IPC Bins.
- Cupboard: for Lab Glassware, Machine Spare Parts, Scoops & Sieves etc.

Optional:

- User-friendly interface with PLC.
- Manually/pneumatic height adjustment for umbrella / insertion dryer.
- HEPA/Pre-Filter at Blower Inlet.



Umbrella Dryer



Insertion Dryer

SKYLINE cGMP ACCESSORIES



CHAIR



STOOL



LOCKERS



CROSS OVER BENCH



WORKING TABLE



TROLLEYS



RACKS



SINK



DUSTBIN



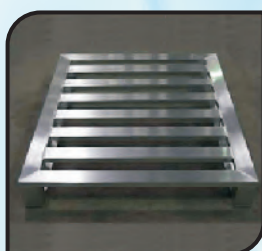
BEAKERS



LADDER



SPOON



PALLET



SOP STAND



SCOOPS





Contact Us:



Regd. Add.: 131, Mayechi Sawli, At & Post. Khanivade, Virar (E),
Tal. Vasai, Dist. Palghar - 401 305. Maharashtra, India.

☎ 9967262404 / 9970270037 / 9967531993

✉ skyline.ptech@gmail.com